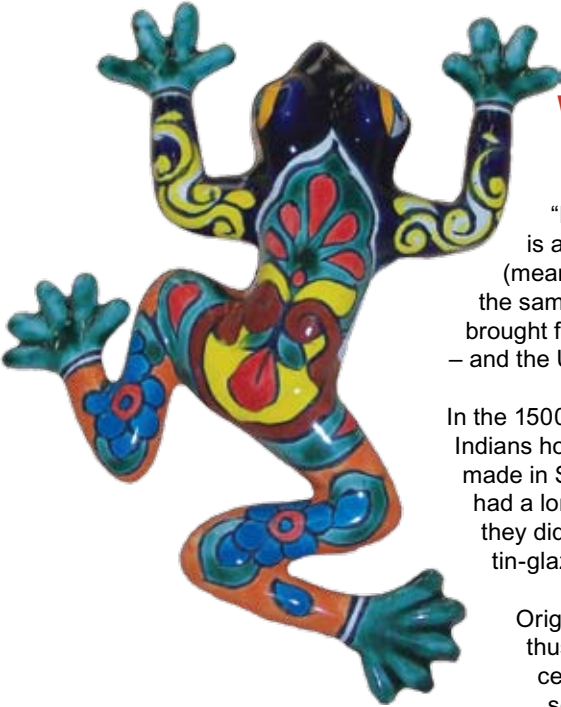


# GARDEN ACCENTS

## Clippings

WINTER 2008



## Breaking News from Pottery Land

### We're expanding our selection of Talavera pottery

by JoAnn Lubick

"But JoAnn, what is Talavera?" you may ask. Well, I'll give you a little background. Talavera is a type of majolica earthenware (majolica is a style of painting), and the oldest tin-glazed (meaning a tin-oxide, white glassy layer) ceramic in America. It is still being manufactured with the same techniques as in the 16<sup>th</sup> century – amazing! Although this type of pottery was originally brought from Talavera de la Reina, Spain, to Puebla, Mexico, it is now much more popular in Mexico – and the U.S. - than in Spain.

In the 1500's, Spanish monks living in Puebla sent for craftsman from Spain to teach the native Indians how to work the clay to create pieces similar to those made in Spain. Although the indigenous people of Puebla had a long tradition of producing high quality earthenware, they did not know how to use a potter's wheel or how to tin-glaze – the main characteristics of majolica ceramic.

Originally, Talavera was produced in cobalt blue on white, thus featuring the most expensive color to produce. In the 18<sup>th</sup> century, green, yellow, mauve and light blue were added to the color scheme.

Here at Garden Accents, we usually stock Talavera pots, but we also like to carry Talavera statuary such as birds, geckos, crosses, frogs, dogs, hogs and suns. Come in this spring and check out our variety of colors and patterns – all waiting to brighten a corner of your garden!

## Calendar

### The Art of Pruning with Bradley Strawhorn

Saturday January 19 10:30 - 11:30 am  
Learn the art of pruning roses and trees.  
Strawhorn instructs classes on Landscape Management at Mission College.

### Learning Landscape Design & Layout with Rosemary Bridwell

Saturday February 16 10:30 - 11:30 am  
Rosemary Bridwell has a California Certified Nursery License and manages her own landscape design business.

### Sunshine Garden Houses with Mike Helle

Saturday March 8 1:00-2:00 pm  
Experience the multi-usage of greenhouses.

Check out our newly revamped website:

[www.garden-accents.net](http://www.garden-accents.net)



# Sheri's Garden

by Sheri Sinni

Well, here we are at the beginning of another year! I wish all of you a very happy, healthy, and prosperous 2008. Now, let's get down to some gardening and what to do in January, February and March.

## January

Plant bare-root fruit trees, roses, and berries.

Plant ornamental vegetables. Some cool-season choices include cabbage, kale, red and green lettuces, and Swiss chard. Now is the time to plant summer blooming bulbs, such as begonias, dahlias, gladiolus, and lilies. Sow seeds of cool-season vegetables for planting out in February. Check Renee's Garden; [www.reneesgarden.com](http://www.reneesgarden.com) for a great selection.

Prune roses and fruit trees and spray (the spray I use is on our website [www.garden-accents.net/new.html](http://www.garden-accents.net/new.html), under New Ideas).

## February

### HAPPY VALENTINE'S DAY

Plant carrots in containers. Some varieties to plant are Thumbelina, Nantestype.

Plant evergreen vines. Good choices are fragrant jasmine, evergreen clematis (Armandii), purple hardenbergia violacea (Happy Wanderer), and trumpet vine (Campsis Radicans).

Plant lilacs. Some good choices in our climate (Zone 14) are Angel White, Blue Skies, Lavender Lady or Sylvan Beauty.

Plant spring blooming perennials. Try alstroemeria, bergenia, bleeding heart, brunnera, campanula, catmint, columbine, coral bell, dianthus, delphinium, diascia, evergreen candytuft, foxglove, linaria purpurea, marguerite, poppy, scabiosa and violet.

## March

### HAPPY ST. PATRICK'S DAY & EASTER

Plant Early Girl Tomatoes. Purchase scented geraniums -- a few of the scents to try are apple, apricot, ginger, lemon, peppermint, nutmeg and rose.

Don't forget to attend the annual San Francisco Flower & Garden Show March 12<sup>th</sup> through 16<sup>th</sup>, 2008 at the Cow Palace. You won't be disappointed.

Until next time, happy gardening! Be healthy, happy and have lots of fun.



**Your turf lawn is  
making a difference  
in our environment  
in many ways!**

# Environmental Benefits of Turf lawn

## POLLUTION CONTROL

- Turf traps and removes dust and dirt from the air.
- 2500 sq.ft. of lawn absorbs carbon dioxide from the atmosphere, and releases enough oxygen for a family of four.

## NATURE'S AIR CONDITIONER

- On a hot summer day, lawns will be 30 degrees cooler than asphalt and 14 degrees cooler than bare soil.
- The front lawns of eight houses have the cooling effect of about 70 tons of air conditioning. An average home air conditioner has a 3-4 ton capacity.
- The cooling effect of irrigated turf reduces the amount of fuel that must be burned to provide the electricity which powers air conditioners.

## A NATURAL FILTER

- Turf grass acts as a natural filter, reducing pollution by purifying the water passing through its root zone.

## SOIL EROSION

- A healthy sodded lawn absorbs rainfall six times more effectively than a wheat field and four times better than a hay field.
- A sodded lawn will absorb greater amounts of rain than a seeded lawn; even after three years of growth.



**ABOVE:** Garden Accents employees, Edgar Guadarrama-Arellano (left) and Benito Arellano-Estrada (right) stand by ice covered fountain. **RIGHT:** Fountain resembles giant ice sculpture.



# The Concrete Truth

## Winter Elements vs. Your Garden Accent

By David York

**The** New Year is here and so is Old Man Winter. To me, fountains are like music in the garden... being a drummer and playing music inspires me, just as the sound of a bubbling fountain can add an amazing, inspiring atmosphere; a soothing sound and a place for the birds to kick back. I bet you're wondering how to still enjoy your outdoor fountain in the cold and freezing weather conditions. Think back to last winter – we had record temps in California. Morgan Hill and Gilroy bottomed out in the mid 20's – plenty cold enough to freeze the water in your fountain or to damage your pump.

### Here are a few helpful hints to protect your investment:

For any temperature below 35°, keeping your fountain running is really the best option because the recirculating water cannot freeze completely. You may have a top layer of ice frozen and some really cool icicles in the morning – almost a piece of natural art. Last year the gardens at Garden Accents looked like they were decorated with giant ice sculptures. If you keep your fountain running, the water will not completely freeze and your pump will continue working. The moving water helps the pump parts from getting sticky and keeps the fountain bowl from completely freezing and cracking.

For continued cold days and nights, my recommendation is to drain the water from the fountain (a wet/dry shop vacuum works well). Covering the fountain with a tarp or heavy blanket will help to keep it from freezing.

For statuary and fountains, good preventive maintenance is to use a clear masonry sealer (the kind that is recommended for cement). This can be purchased at most hardware stores. Apply this product on a warm day to keep your fountains and statues from absorbing moisture in the winter months.

You might have noticed on your fountain surface a white residue. This is caused by climate change and cold weather. Also, concrete has alkali in it which can appear on the surface. The best way to clean this is with white vinegar and water (about ¾ vinegar /¼ water) mixed together. You can use a sponge or a rag to clean the surface with this mixture.

In areas where it snows, draining the water completely and covering the fountain or storing it in the garage is the best option. Hairline cracks are common on all fountains and shouldn't be taken too seriously – as these can be repaired easily (See Garden Accent's Summer Newsletter 2007 at [www.garden-accents.net](http://www.garden-accents.net) for my tips on how to repair!).

These few tips will help to preserve your fountain so you can enjoy it even more when spring arrives.

And that's The Concrete Truth!

Cheers, Dave

## From Mara's Cucina

### Basic Risotto

**MARA PEREZ** was born in Lucca, Tuscany in Italy. She moved to this area in 1972 and has been a member of the Garden Accents Family for two years.

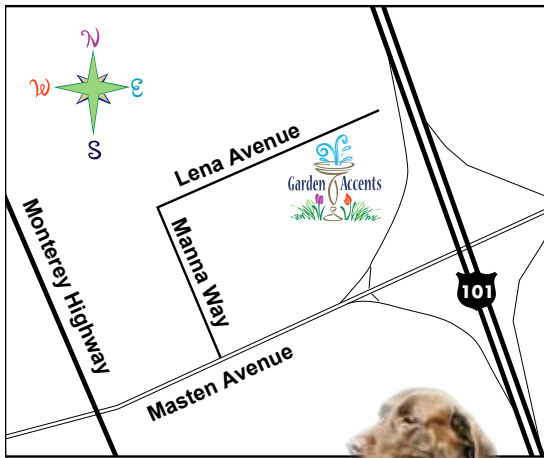
- 4 cups reduced-sodium chicken broth
- 3 tbsp butter
- ¾ cups finely chopped onion (1 onion)
- 1½ cups arborio rice or medium-grain white rice
- ½ cup dry white wine
- ½ cup freshly grated parmesan cheese
- ½ tsp salt
- ¼ tsp freshly ground black pepper

In a medium saucepan, bring the broth to a simmer. Cover the broth and keep hot over low heat.

In a large heavy saucepan, melt 2 tbsp butter over medium heat. Add onion and sauté until tender but not brown (about 3 minutes). Add rice and stir to coat with butter. Add wine and simmer until the wine has almost completely evaporated (about 3 minutes). Add ½ cup of the simmering broth and stir until almost completely absorbed (about 2 minutes). Continue cooking rice, adding the broth ½ cup at a time, stirring constantly and allowing each addition of broth to absorb before adding the next – until rice is tender but still firm to the bite and the mixture is creamy (about 20 minutes total). Remove from heat and stir in the parmesan cheese, the remaining tbsp of butter and the salt & pepper.

Transfer the risotto to a serving bowl and serve immediately. Makes 6 side-dish servings

If you would like to sample Mara's risotto dish, swing by Garden Accents on Saturday, February 16<sup>th</sup> between Noon and 2pm.



11155 Lena Avenue  
 Gilroy, CA 95020  
 408.846.4555  
 www.garden-accents.net

PRSR/STD  
 US POSTAGE  
**PAID**  
 GILROY, CA 95020  
 PERMIT No.527

**Come visit us!**



**Miss Kitty**



**Kona**

**OPEN**

Monday thru Saturday — 9 am - 5 pm  
 Sunday — 10 am - 4 pm

## Sunshine Garden Houses with Mike Helle

Sunshine Greenhouses, a Division of Greenhouse Systems Corporation, is the largest distributor of Sunshine Greenhouse Kits, Garden Sheds, & Entertainment Structures. As a specialty retailer of home and garden furnishings, their brands are among the best known and most respected in the industry. Their high quality residential greenhouses have been hugely successful due to their superior craftsmanship, solid design and sturdy construction. Mike Helle is scheduled to provide information on how you can have one of these amazing greenhouses. Join us for this great presentation on Saturday, March 8 — 1:00-2:00 pm.



[www.sunshinegreenhouse.com](http://www.sunshinegreenhouse.com)



Deanna Miller of Morgan Hill is our latest gift card winner.



**WIN A GARDEN ACCENTS GIFT CARD**  
 (\$50.00 Value)

Name: \_\_\_\_\_

Phone: \_\_\_\_\_

Email: \_\_\_\_\_

Just clip this coupon and drop it off or mail it to Garden Accents, 11155 Lena Avenue, Gilroy, CA 95020. Drawing to be held on St. Patrick's Day, March 17, 2008. (No need to be present to win!)